

# Kodak 9500

Cone Beam 3D System

Exceptional diagnostic abilities. Quality you can count on.

Robust yet easy-to-use, the full-field Kodak 9500 cone beam 3D system combines innovation with simplicity to address the dental and maxillofacial diagnostic imaging needs of today's dental practitioners. Quickly and easily visualize your patients' craniofacial structures with the unparalleled precision of 3D – with Kodak's proven and reliable equipment platform you can trust.

Full-field 3D imaging. Time-saving features.

Cone-beam Computed Tomography (CT) technology delivers anatomically correct images to help ensure accurate diagnoses and treatment plans. Two modes – full-field and full-jaw – help you get the images you need for specific analysis and diagnosis. Fast scans and reconstruction decrease downtime and help improve your overall productivity.

Safest exams. Flexible features.

From single jaw to full craniofacial imaging, the Kodak 9500 system provides flexible collimation, allowing you to scan only the areas you need at the lowest possible radiation dosage. So you capture clear, high quality images that are easier to diagnose – while minimizing patient risk. In addition, customizable imaging features make the Kodak 9500 system ideal for many specialties including oral and maxillofacial radiology, periodontics, oral and maxillofacial surgery, and orthodontics.



Different by design. Improved patient comfort.

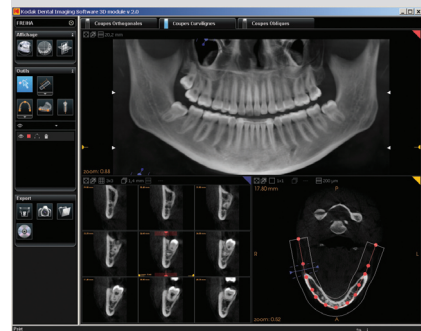
The modern and user-friendly design of the Kodak 9500 system truly distinguishes it from other full-field 3D systems. Face-to-face positioning ensures better patient participation, while its open design accommodates patients of all sizes and provides convenient wheelchair access. Fast scanning minimizes the risk of patient movement during the scan and ensures more relaxed patients...exactly the conditions required for successful examinations.

# Easy-to-use software. Complete integration.

The Kodak 9500 system outputs DICOM formats and easily integrates with DICOM environments. As a result, it can be connected to Picture Archiving Systems (PACS) or a high-quality medical printer. Plus, the 3D images can be quickly exported to implant planning software applications such as SimPlant™ and NobelGuide.™ And because the Kodak 9500 system integrates perfectly with the easy-to-use Kodak dental imaging software, you receive all the tools you need to manipulate, print, share, and archive your images.

## KODAK 9500 Cone Beam 3D System features.

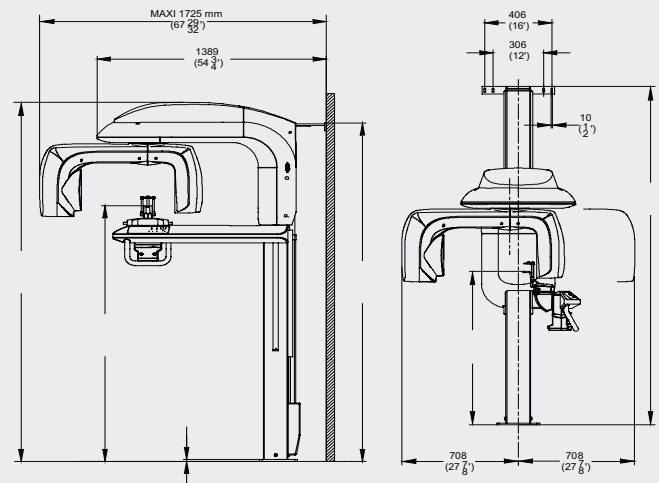
- Designed for ease-of-use and optimal patient comfort
- Pre-programmed settings help you easily capture high-quality images
- Fast image reconstruction saves time and increases productivity
- Standard DICOM 3.0 file format supports DICOM integration and printing
- 3D imaging software includes implant planning module
- Capture dental and craniofacial anatomy in a single exam
- Backed by a team of support experts and a standard two-year warranty



## TECHNICAL SPECIFICATIONS

Tube voltage	60 – 90 kV (max), pulsed mode
Tube current	2 – 15 mA (max)
Frequency	140 kHz (max)
Tube focal spot	0,7 mm (IEC 336)
Total filtration	>2.5 mm eg. Al
Weight	176kg
3D technology	Amorphous silicon flat panel
Field of view	Full-field mode: 184 x 206 mm Full-jaw mode: 90 x 150 mm
Reconstruction time	2 min. 20 sec.*

\* depends on computer configuration



Minimum operational required space:\*\*

Width x depth: 67.5" (1725 mm) x 64.4" (1635 mm)

\*\*Refer to local regulatory requirements

For more information visit [www.kodakdental.com](http://www.kodakdental.com).



Carestream Health

©Carestream Health, Inc. 2008.  
The Kodak trademark and trade dress are used under license from Kodak.